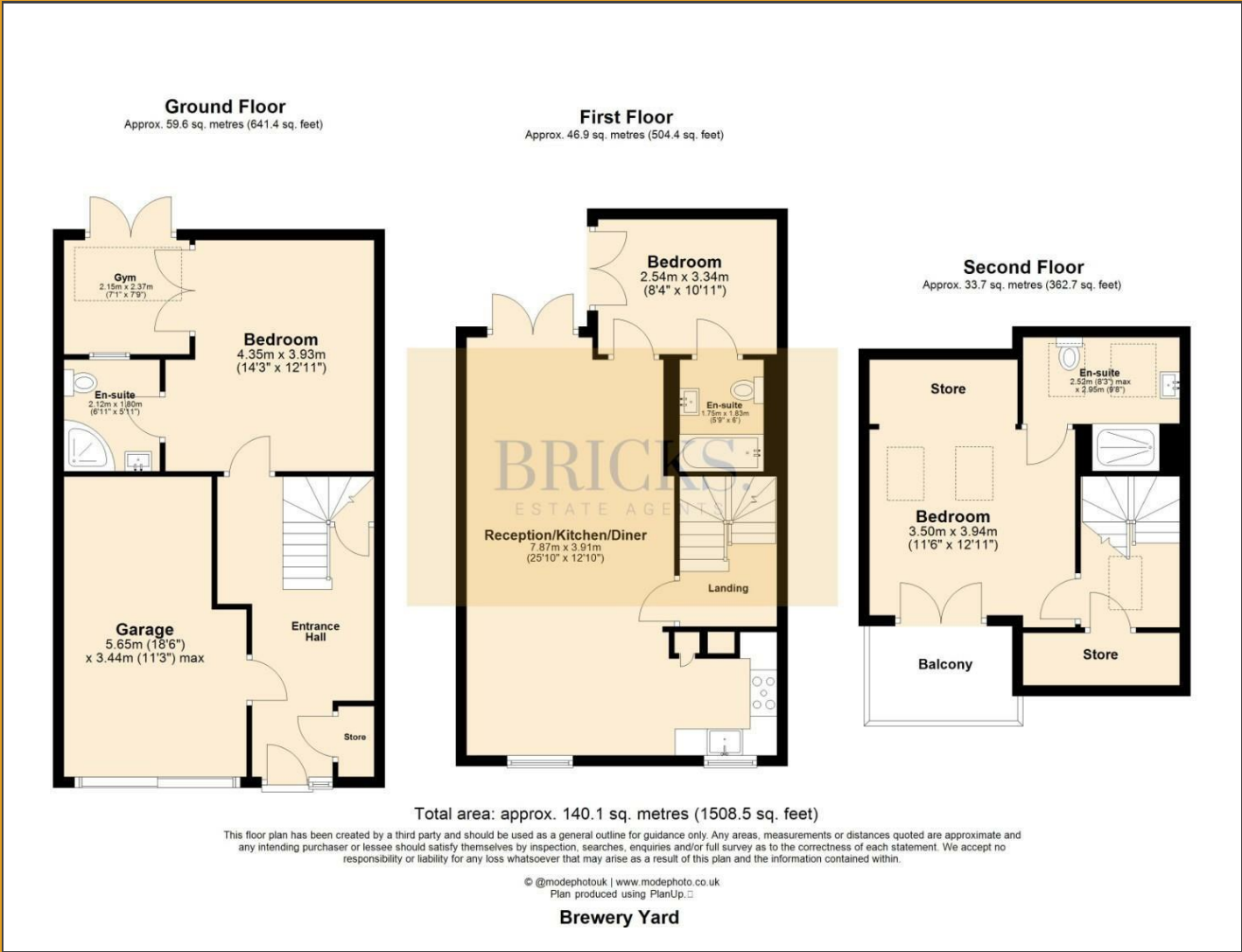


Floor Plan

BRICKS.  
ESTATE AGENTS



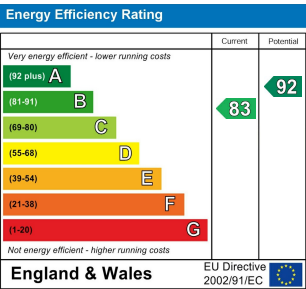
BRICKS.  
ESTATE AGENTS

£600,000

These particulars, whilst believed to be accurate are set out as a general outline only for guidance and do not constitute any part of an offer or contract. Intending purchasers should not rely on them as statements of representation of fact, but must satisfy themselves by inspection or otherwise as to their accuracy. No person in this firms employment has the authority to make or give any representation or warranty in respect of the property.

Contact Us

- 0203 634 9998
- hello@bricksestateagents.co.uk
- Crate 9 15 Oakwood Hill Industrial Estate, Loughton, Essex, IG10 3TZ



19 Brewery Yard Watton Road,  
Ware, SG12 0GF

Welcome To Brewery Yard A Luxurious Haven in the Heart of Ware

Bricks Estate Agents proudly presents an exquisite opportunity to experience life at Brewery Yard, an upscale private gated development nestled in the vibrant center of Ware. This remarkable three-bedroom, three-en-suite townhouse masterfully blends historic charm with contemporary elegance, showcasing stunning character beams and beautifully exposed external brickwork, enhanced by a modern glass Juliet balcony and chic boutique decor.



# 19 Brewery Yard Watton Road, Ware, SG12 0GF

3 3 2 B

- \*Offers In The Excess Of £600,000\*
  - 3 Bedroom & 3 Bathroom Character Filled Townhouse
  - Open Plan Modern Living Improving Your Quality Of Life
  - Internal Juliet Balcony & External Master Bedroom Balcony With Park Views
  - Ample Storage Throughout This Charming Home
- \*Open Day Saturday 25th October 2025 Viewing By Appointment Based Booking Only\*
  - Driveway & Integral Garage With Visitor Parking Available
  - High Spec Finishing & Chiq Boutique Décor Throughout
  - Private Gated Development - £595.00 Estate Charge Per Annum
  - Located Just A Stone's Throw Away From The Bustling Town Centre Of Ware

Bedroom Three  
14'3" x 12'10" (4.35 x 3.93)

En-Suite  
6'11" x 5'10" (2.12 x 1.80)

Multi Function Room  
7'0" x 7'9" (2.15 x 2.37)

Garage  
18'6" x 11'3" (5.65 x 3.44)

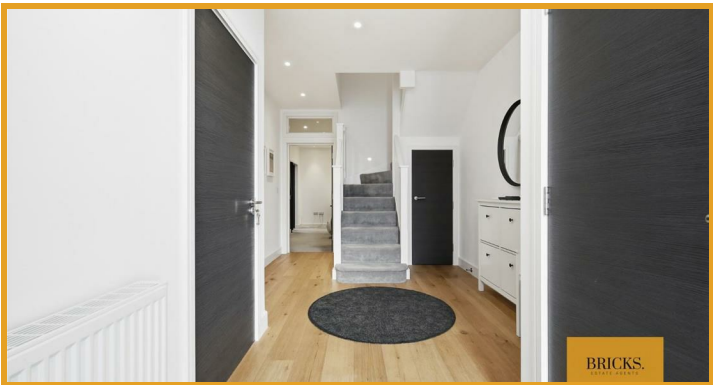
Living / Kitchen / Dining Room  
25'9" x 12'9" (7.87 x 3.91)

Bedroom Two  
8'3" x 10'11" (2.54 x 3.34)

En-Suite  
5'8" x 6'0" (1.75 x 1.83)

Master Bedroom  
11'5" x 12'11" (3.50 x 3.94)

En-Suite  
8'3" x 9'8" (2.52 x 2.95)



Directions

BRICKS.  
ESTATE AGENTS